

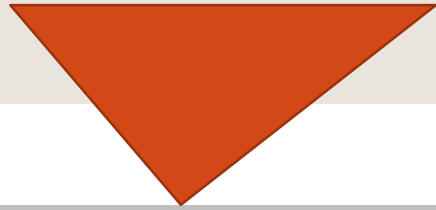
M.P.PATEL INSTITUTE OF ENGLISH



Paper 305 ELT & Spoken English
Topic – Speech Mechanism
Dr. A. H. Pandya



PHONETICS



- A Scientific study of English Sounds

Pronunciation

PHONOLOGY



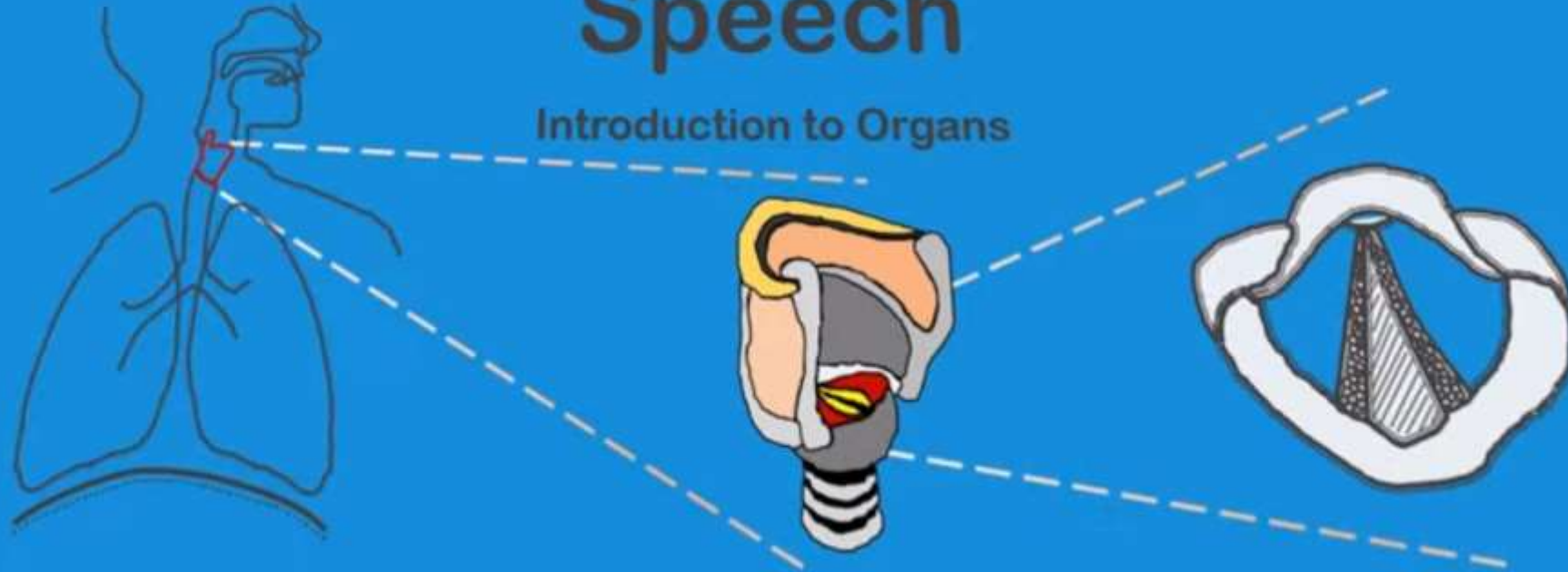
A Linguistic study of language

Words



Phonetics – Organs of Speech

Introduction to Organs

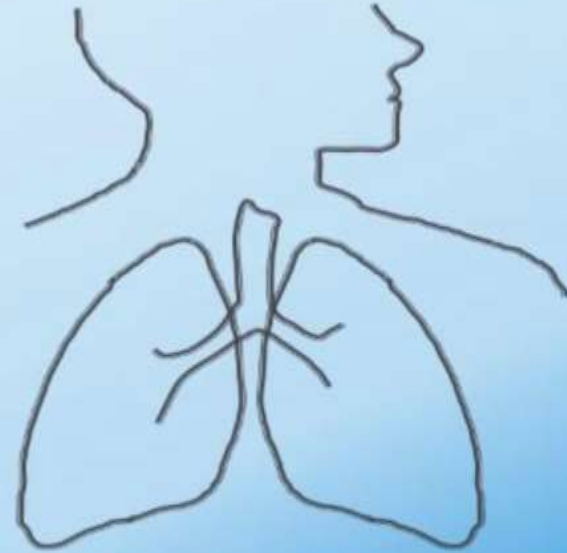


THROAT, TONGUE, LIPS, TEETH

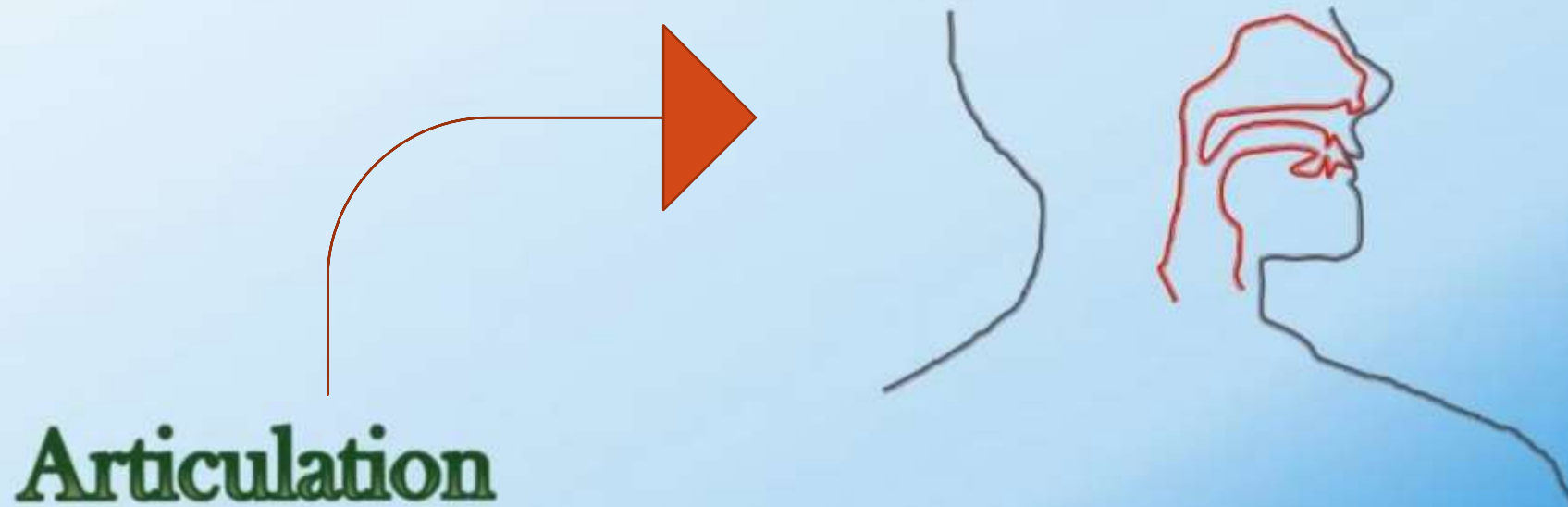


SPEECH ANATOMY

Respiration

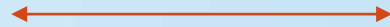


SPEECH ANATOMY

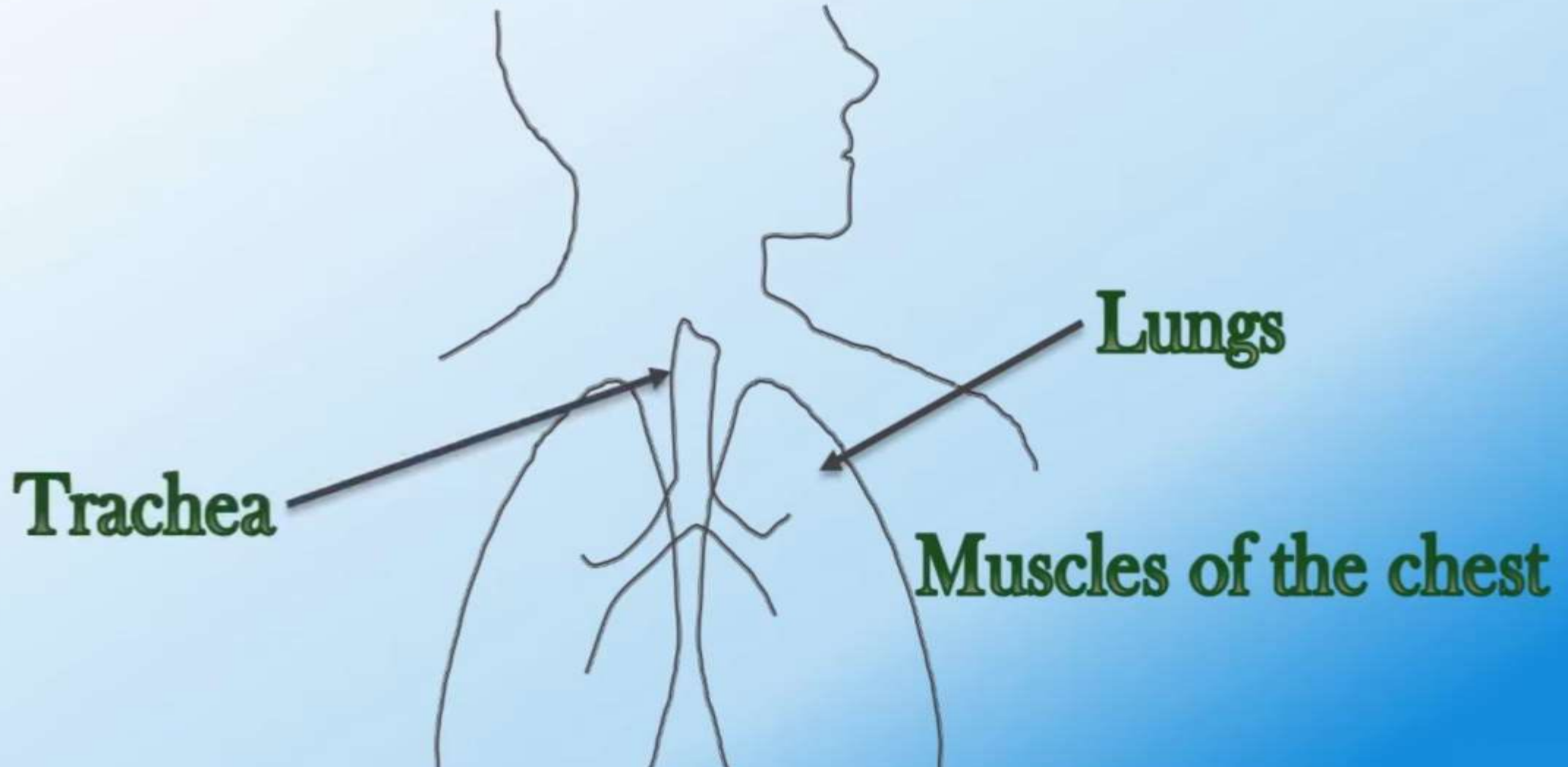


SPEECH ANATOMY

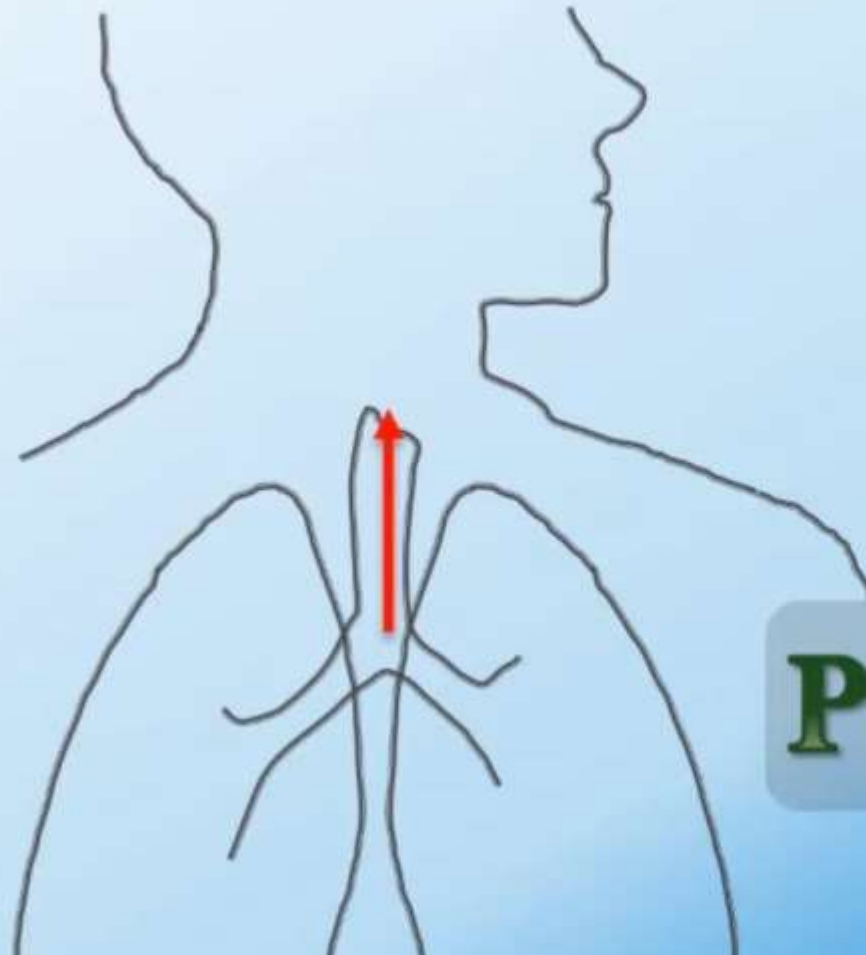
Phonation



RESPIRATORY SYSTEM



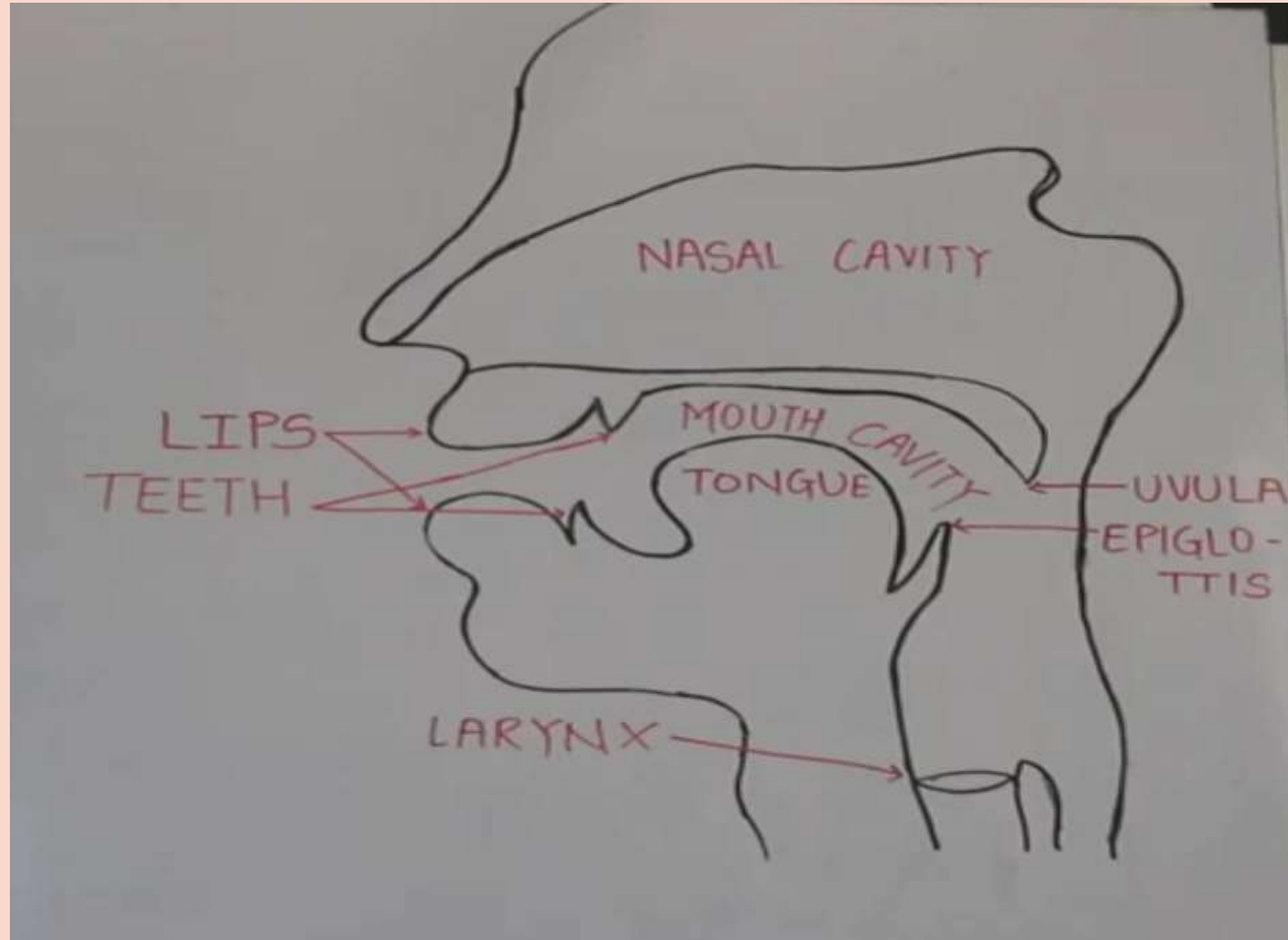
RESPIRATORY SYSTEM



Pulmonic Air

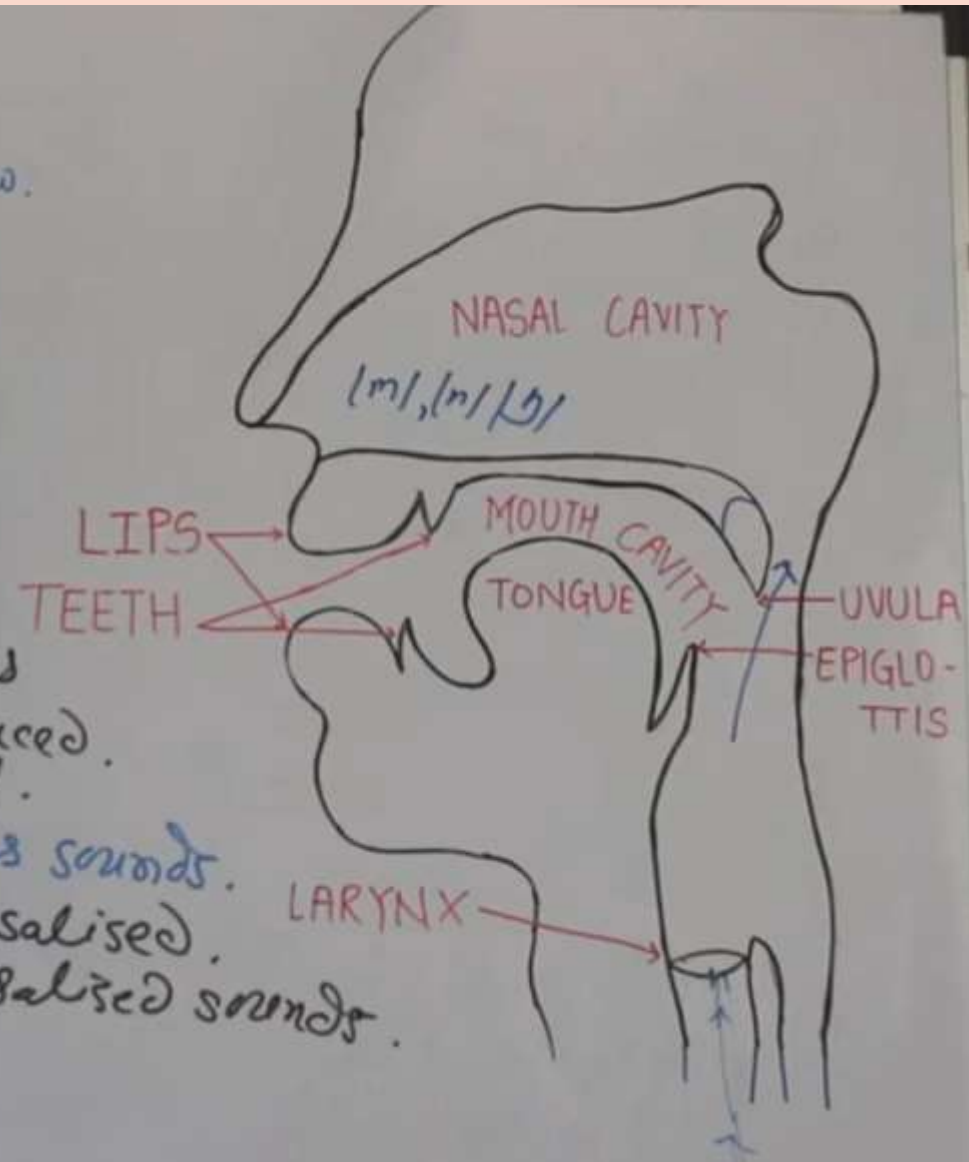


SPEECH MACHANISM OR THE PRODUCTION OF SOUND



- The speech Mechanism-

- Language is system of sound.
- Body Organs - tongue, teeth, lips, mouth, jaw.
Larynx, vocal cords, Teeth,
Palate, pharynx, epiglottis,
teeth ridge.
- Sounds are produced by air-stream
- Air comes from our lungs.
- Larynx contains the vocal cords.
(voice-box)
- Vocal cords held very close & air passes
through it - Voiced sounds are produced.
- Vibrate vocal cords → Voiced sound.
Vocal cords do not vibrate → Voiceless sounds.
- Some sounds are oral & some are nasalised.
- When soft palate lowered down - nasalised sounds.



- **SOME IMPORTANT POINTS TO PONDER
IN THIS TOPIC**

- **VOCAL CORDS** vibrate when they produce sound
- **WIND PIPE** is also known as **Trachea**
- **SOFT PALATE** is called **VELUM**
- **End of the SOFT PALATE** is called **UVULA**
- **The opening between the VOCAL CORDS** is called **UVULA**
- **ALVEOLAR RIDGE** or **TEETH RIDGE**

Three NASAL sounds



Thank You

